

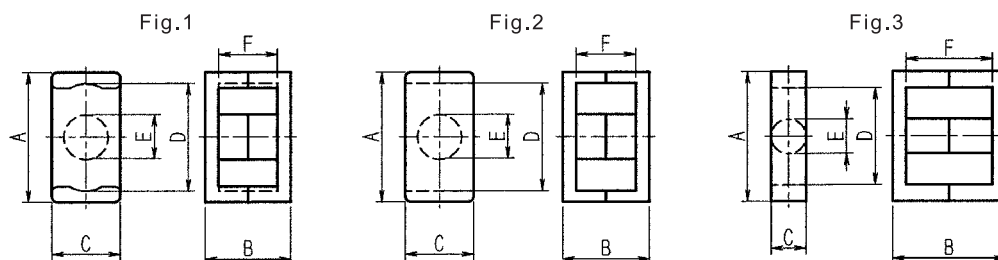
EER Type Cores

Ordering Code 品名の構成

2G8-EER- 9.5B

Material
材質

Type
形



Dimensions Effective Parameter 寸法及び磁心の実効定数

Cores 形名	Dimensions (mm) 寸法						Effective Parameter 磁心の実効定数					Weight 重量 (g)	BOBBIN Available	Fig.
	A	B	C	D	E	F	C1 (mm ⁻¹)	Ae (mm ²)	le (mm)	Ve (mm ³)	Aw (mm ²)			
EER-7.5	7.5±0.15	5.0±0.2	4.0±0.1	6.1 ^{+0.25} ₀	2.6±0.1	3.45 ^{+0.2} _{-0.1}	2.28	5.83	13.3	77.3	6.3	0.41	8P	1
EER-9.35X3.95	9.35±0.2	3.95±0.2	4.6±0.1	7.7 ^{+0.3} _{-0.05}	3.0±0.1	2.35 ^{+0.2} _{-0.1}	1.80	7.37	13.2	97.8	5.8	0.50	-	1
EER-9.5B	9.35±0.2	4.9±0.2	4.9±0.1	7.63±0.2	3.4±0.1	3.35±0.2	1.67	8.47	14.2	120	7.1	0.59	8P	1
EER-11	11.0±0.25	5.0±0.2	5.8±0.2	9.0±0.25	4.2±0.15	3.2±0.2	1.23	12.1	14.9	179	7.7	1.00	10P	1
EER-14.5	14.5±0.2	5.9±0.1	6.7±0.1	11.8±0.2	4.7±0.1	3.3±0.2	1.08	17.6	19.0	333	11.7	1.8	10P	2
EER-20RA	19.2±0.4	24.0±0.5	5.6 ^{+0.2} _{-0.3}	14.0±0.4	5.6 ^{+0.2} _{-0.3}	17.6 ^{+0.6} _{-0.2}	1.91	27.6	52.7	1454	75.2	7.8	-	3
EER-25RD	25.4±0.4	20.0±0.4	7.2 ^{+0.2} _{-0.3}	19.2min	7.2 ^{+0.2} _{-0.3}	13.0±0.4	1.13	43.5	49.2	2142	80.9	11.0	-	3
EER-25RC	25.4±0.4	32.6±0.4	7.2 ^{+0.2} _{-0.3}	19.2min	7.2 ^{+0.2} _{-0.3}	25.6±0.4	1.75	42.4	74.2	3150	159.4	15.9	-	3

Electrical Characteristics 電気的特性

Cores 形名	AL-Value (nH/N ²) Without air gap ギャップなし				
	2H1	2E2B	2G1	2H4A	2G8
EER-7.5	2800min	1995min	950±25%		700±25%
EER-9.35X3.95	3220min	2310min	1450±25%		980±25%
EER-9.5B	4480min	3150min	1600±25%		1060±25%
EER-11	5600min	3850min	2200±25%		1500±25%
EER-14.5	6300min	3850min	2200±25%		1500±25%
EER-20RA			2800±25%		
EER-25RD					1900±25%
EER-25RC					1600±25%