

形状・寸法 / 特性

Shapes and dimensions/Characteristics

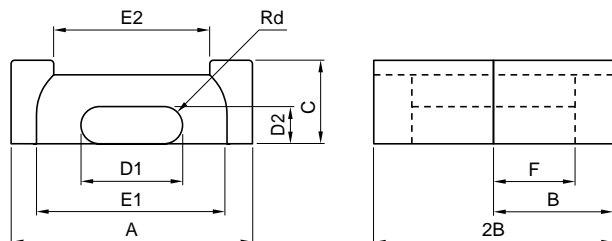


Fig.1

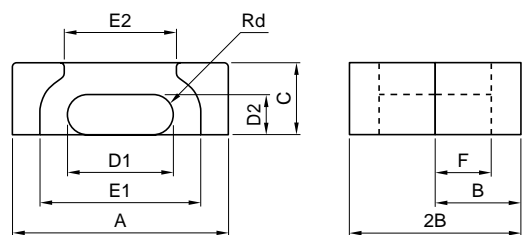


Fig.2



形状 Type	寸法 Dimensions(mm)										Core Fig.	
	A	2B	B	C	D1	D2	E1 min.	E2 min.	2F min.	F		Rd
EEPC-10D	10.2±0.2	8.10	4.05±0.10	3.40±0.10	5.00±0.10	1.90±0.10	7.60	5.30	5.10	2.65±0.10	0.95	2
EEPC-13D	13.3±0.3	13.2	6.60±0.20	4.60±0.15	5.60±0.15	2.05±0.10	10.5	8.30	8.60	4.50±0.20	1.03	1
EEPC-17D	17.6±0.4	17.1	8.55±0.20	6.00±0.15	7.70±0.15	2.80±0.10	14.3	11.5	11.7	6.05±0.20	1.40	1
EEPC-19D	19.1±0.5	19.5	9.75±0.20	6.00±0.15	8.50±0.15	2.50±0.10	15.8	13.1	14.1	7.25±0.20	1.25	1
EEPC-25D	25.1±0.5	25.0	12.5±0.2	8.00±0.20	11.5±0.2	4.00±0.10	20.65	17.1	17.4	9.00±0.30	2.00	1
EEPC-27D	27.1±0.5	32.0	16.0±0.2	8.00±0.20	13.0±0.3	4.00±0.10	21.6	18.5	23.4	12.0±0.3	2.00	1
EEPC-30D	30.1±0.5	35.0	17.5±0.2	8.00±0.20	15.0±0.3	4.00±0.10	23.6	20.0	25.4	13.0±0.3	2.00	1

形状 Type	AL value(nH/N ²)±25%					コア定数 Core parameters					Weight (g/set)
	MB1	MB3	MB4	MBT1	MC2	C ₁ (mm ⁻¹)	Le(mm)	Ae(mm ²)	Amin(mm ²)	Ve(mm ³)	
EEPC-10D	648	724	724	828	492	2.05	17.8	8.73	8.73	155	1.0
EEPC-13D	687	787	787	931	497	2.34	28.1	12.1	10.6	340	2.3
EEPC-17D	1160	1110	1110	1700	793	1.83	38.2	20.9	19.9	799	4.9
EEPC-19D	1030	1160	1160	1530	696	2.11	43.5	20.6	19.9	897	5.6
EEPC-25D	1640	1890	1890	2460	1100	1.35	56.3	41.5	41.2	2340	13.7
EEPC-27D	1550	1860	1860	2380	1030	1.46	71.2	48.9	48.6	3480	19.2
EEPC-30D	1660	2190	2190	2550	1100	1.36	77.3	56.6	56.6	4380	24.4