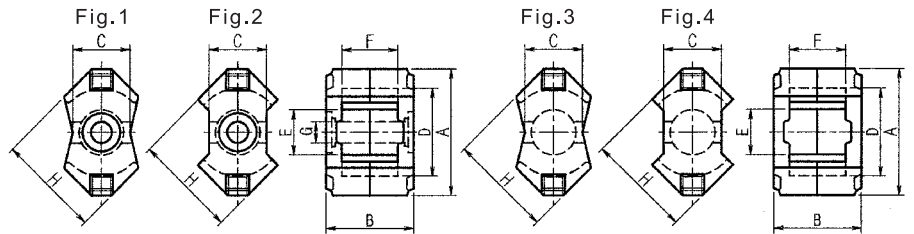


RM Type Cores

Ordering Code 品名の構成

2G8 - RM - 6

Material 材質
Type 形
Diameter(≒E) ≒E寸法



Dimensions and Effective Parameter 寸法及び磁心の実効定数

Cores 形名	Dimensions (mm) 寸法								Effective Parameter 磁心の実効定数					Weight 重量 (g)	Fig.
	A	B	C	D	E	F	G	H	C1 (mm ⁻¹)	Ae (mm ²)	le (mm)	Ve (mm ³)	Aw (mm ²)		
RM-4	11.0 ⁺⁰ _{-0.4}	10.5 ⁺⁰ _{-0.2}	4.6 ⁺⁰ _{-0.2}	7.95 ^{+0.4} ₀	3.9 ⁺⁰ _{-0.2}	7.0 ^{+0.4} ₀	2.0 ^{+0.1} ₀	9.8 ⁺⁰ _{-0.4}	1.90	11.0	21.0	232	15.7	1.4	2
RM-5	14.9 ⁺⁰ _{-0.5}	10.5 ⁺⁰ _{-0.2}	6.8 ⁺⁰ _{-0.4}	10.2 ^{+0.4} ₀	4.9 ⁺⁰ _{-0.2}	6.3 ^{+0.4} ₀	2.0 ^{+0.1} ₀	12.3 ⁺⁰ _{-0.5}	1.00	20.8	20.8	430	18.2	2.9	2
RM-6	17.9 ⁺⁰ _{-0.6}	12.5 ^{+0.2} _{-0.4}	8.2 ⁺⁰ _{-0.4}	12.4 ^{+0.5} ₀	6.4 ⁺⁰ _{-0.2}	8.0 ^{+0.5} _{-0.1}	3.0 ^{+0.15} ₀	14.7 ⁺⁰ _{-0.6}	0.86	31.3	26.9	840	26.0	4.5	1
RM-8	23.2 ⁺⁰ _{-0.9}	16.5 ⁺⁰ _{-0.2}	11.0 ⁺⁰ _{-0.4}	17.0 ^{+0.6} ₀	8.55 ^{+0.3} ₀	10.8 ^{+0.4} ₀	4.4 ^{+0.2} ₀	19.7 ⁺⁰ _{-0.6}	0.67	53.0	35.0	1850	48.7	12	1
RM-10	28.5 ⁺⁰ _{-1.3}	18.7 ^{+0.1} _{-0.3}	13.5 ⁺⁰ _{-0.5}	21.2 ^{+0.9} ₀	10.9 ⁺⁰ _{-0.4}	12.4 ^{+0.6} ₀	5.4 ^{+0.2} ₀	24.7 ⁺⁰ _{-1.1}	0.50	83.0	42.0	3470	69.5	21	2
RM-4J	11.0 ⁺⁰ _{-0.4}	10.5 ⁺⁰ _{-0.2}	4.6 ⁺⁰ _{-0.2}	7.95 ^{+0.4} ₀	3.9 ⁺⁰ _{-0.2}	7.0 ^{+0.4} ₀		9.8 ⁺⁰ _{-0.4}	1.62	13.9	22.5	313	15.7	1.6	4
RM-5J	14.9 ⁺⁰ _{-0.5}	10.5 ⁺⁰ _{-0.2}	6.8 ⁺⁰ _{-0.4}	10.2 ^{+0.4} ₀	4.9 ⁺⁰ _{-0.2}	6.3 ^{+0.4} ₀		12.3 ⁺⁰ _{-0.5}	0.94	23.8	22.3	530	18.2	3.1	4
RM-6J	17.9 ⁺⁰ _{-0.6}	12.5 ^{+0.2} _{-0.4}	8.2 ⁺⁰ _{-0.4}	12.4 ^{+0.5} ₀	6.4 ⁺⁰ _{-0.2}	8.0 ^{+0.5} _{-0.1}		14.7 ⁺⁰ _{-0.6}	0.80	35.7	28.5	1020	26.0	5.1	3
RM-8J	23.2 ⁺⁰ _{-0.9}	16.5 ⁺⁰ _{-0.2}	11.0 ⁺⁰ _{-0.4}	17.0 ^{+0.6} ₀	8.55 ^{+0.3} ₀	10.8 ^{+0.4} ₀		19.7 ⁺⁰ _{-0.7}	0.60	63.0	38.4	2440	48.7	12.2	3
RM-10J	28.5 ⁺⁰ _{-1.3}	18.7 ^{+0.1} _{-0.3}	13.5 ⁺⁰ _{-0.5}	21.2 ^{+0.9} ₀	10.9 ⁺⁰ _{-0.4}	12.4 ^{+0.6} ₀		24.7 ⁺⁰ _{-1.1}	0.45	98.0	44.0	4310	69.5	22	4

Electrical Characteristics 電気的特性

Cores 形名	AL-Value (nH/N ²) Without air gap ギャップなし			
	2H1	2E2B	2G1	2G8
RM-4	4060min	3900 ^{+4.0} _{-3.0} %	1700±25%	1050±25%
RM-5	7700min	5600min	2800±25%	1670±25%
RM-6	10500min	8000min	3800±25%	1900±25%
RM-8	11000min	8750min	5500±25%	2900±25%
RM-10	14700min	11700min	8400±25%	4500±25%
RM-4J	4200min	3570min	1800±25%	1250±25%
RM-5J	8260min	6300min	3000±25%	1900±25%
RM-6J	9450min	8050min	3600±25%	2200±25%
RM-8J				3200±25%
RM-10J		14700min	8200±25%	4500±25%

Material: 2G8 (Low core loss 低コアロス材)

Code 品名	AL-Value (nH/N ²) With air gap ギャップ付							
	AL***	AL40	AL63	AL100	AL160	AL250	AL315	AL400
2G8-RM-4-AL***	Gap (mm) ≒	0.400	0.220	0.110	0.050			
2G8-RM-5-AL***	Gap (mm) ≒		0.340	0.220	0.120	0.060	0.050	
2G8-RM-6-AL***	Gap (mm) ≒			0.380	0.220	0.120	0.090	0.060
2G8-RM-4J-AL***	Gap (mm) ≒	0.510	0.280	0.160	0.090			
2G8-RM-5J-AL***	Gap (mm) ≒		0.420	0.270	0.150	0.090	0.060	
2G8-RM-6J-AL***	Gap (mm) ≒			0.460	0.270	0.150	0.110	0.080